

## Features & Benefits

- Proven Beckett CleanCut operation now available in a two-stage pump
- Integrated solenoid valve for cleaner light-offs and shut-offs
- Provides Xtra Lift of two-stage pump with solenoid valve for cleaner burning
- Made exclusively for Beckett
- Five year warranty

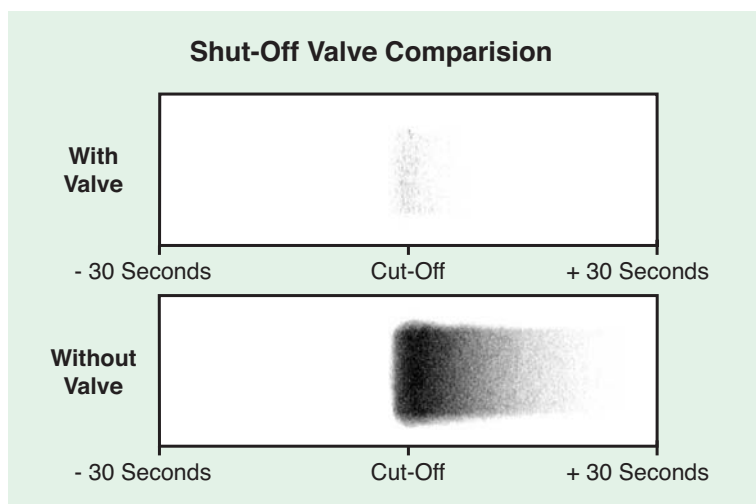


## Product Description

- CleanCut XL is a two-stage version of the popular Beckett CleanCut pump

## Operation/How It Works

- The Beckett CleanCut XL two-stage pump uses a solenoid valve to control the piston cut-on and cut-off. Using the CleanCut XL with a pre-purge control or Beckett PDTimer ensures that nozzle cut-on occurs with the motor at full speed, and ensures instantaneous cut-off of oil flow at shutdown. The result is clean burning operation with the added lift of a two-stage pump.



## Applications

- For use when oil lift requirements exceed 14'
- Direct replacement for Suntec B2VA-8216 when solenoid cutoff is desired
- For CleanCut benefits, must be used with pre-purge control or Beckett PD Timer (included)

## Performance Specifications

### Hydraulic Data

- Nozzle pressure range: 100 – 200 psi
- Two pipe suction height: 18' max
- Factory set pressure: 100 psi
- Operating fluids: #2 and lighter fuel oils

- Inlet pressure: 10 psi max

- Rated speed: 3450 RPM

### Solenoid data

- Voltage: 24, 115, 220 VAC, 60 Hz and 12 VDC coils available

- Power consumption: 9 watts

- Ambient temperature: 46°C / 115°F max

- Maximum pressure: 200 psi

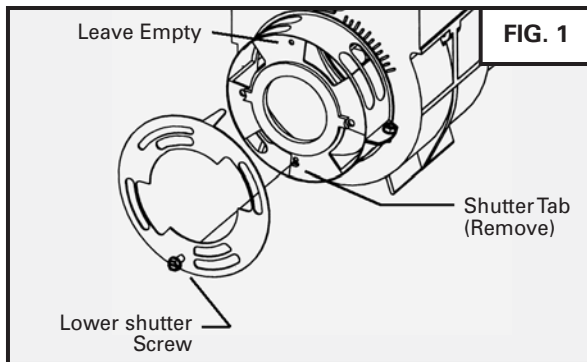
- Certification: UL, CUL

### Installation and Wiring

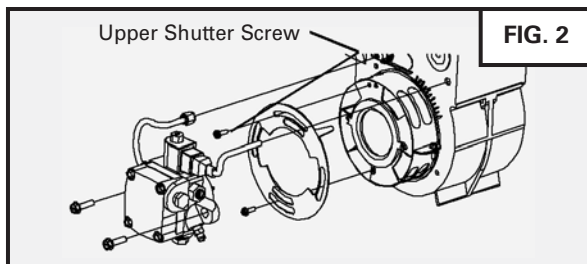
- Beckett CleanCut XL is a direct replacement for most two-stage pumps that have a valve
- For upgrading a two-stage pump without a valve to a Beckett CleanCut XL, the following mounting and wiring guidelines should be used:

#### Mounting Pump

To install a CleanCut XL fuel unit on chassis with existing shutter tab, it is necessary to remove the shutter tab from the burner. See Figure 1.



To install a CleanCut fuel unit on a housing with two upper mounting screw holes, make sure the upper screw is installed in the hole closest to the front of the burner (air tube side). See Figure 2.



- Complete installation instructions and wiring diagram supplied with product

#### Dimensional Information

- Same mounting footprint as original CleanCut, with depth of a standard two-stage pump

#### Replaces

- Beckett 51861U pump/valve kit
- Alternate to Beckett 2583U (Suntec B2VA-8216)

#### Replacement Parts

- Strainer / gasket – 51843U
- Valve stem – 21877U
- Valve coils: 115 VAC – 21755U; 220/240 VAC – 21756U; 12 VDC / 24 VAC – 21754U

#### For more information, contact:

[www.beckettcorp.com](http://www.beckettcorp.com)

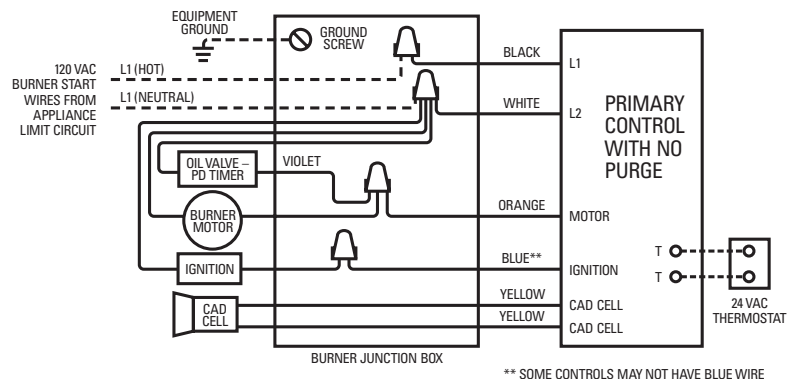
**R.W. Beckett Corporation** • P.O. Box 1289 • Elyria, Ohio 44036 • (800) 645-2876 • (440) 327-1060 • FAX (440) 327-1064  
**R.W. Beckett Canada Ltd.** • Unit 3 - 430 Laird Road • Guelph, Ontario, Canada N1G 3X7 • (800) 665-6972 • FAX (519) 763-5656

#### Wiring Valve/PD Timer Cordset

When installing a CleanCut XL on a burner with a pre-purge type control, simply plug the valve cordset directly into the CleanCut XL solenoid valve

When installing a CleanCut XL on a burner WITHOUT a pre-purge type control, it is necessary to use the Beckett PD Timer (included), and follow these steps:

- If the burner has a solenoid valve, detach and remove existing valve cordset and delay timer, if there is one.
- Plug the PD timer securely into the coil of the valve.
- Route the PD timer cordset through the housing wiring area and into the 4x4 wiring box. Connect the PD timer leads to the motor and neutral leads of the primary control. See the typical wiring diagram below.
- Secure primary control and igniter. Energize burner. The valve should be energized 4 seconds after the motor starts.



\*\* SOME CONTROLS MAY NOT HAVE BLUE WIRE